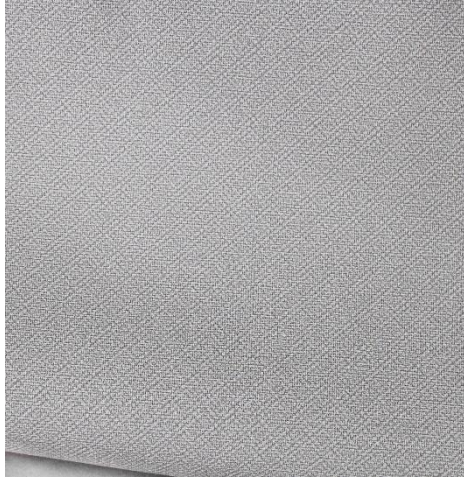


VINYL TWEED



Specifications:

content: 84% PVC, 16% Polyester
 backing: Synthetic Latex Backing
 finish: iClean
 Repeat: n/a
 weight: 37 oz. / lin. yd.
 width: 54 inches

Flammability Passes:

California Tech. Bulletin #117-2013
 UFAC Class 1
 NFPA 260 Class 1
 MVSS 302

Performance:

abrasion: Heavy Duty – Exceeds 100,000 cycles
 (Wyzenbeek – Cotton duck abradant) (ASTM D4157)
 light fastness: Class 4/20 hrs. min. (AATCC16A)
 color fastness: Class 4.5 (ASTM D3597, AATCC 8) Wet
 Class 4.5 (ASTM D3597, AATCC 8) Dry
 physical properties: 119 lbs. warp, 102 lbs. weft (ASTM D5034) Breaking Strength
 68 lbs. warp, 56 lbs. weft (ASTM D4034) Seam Slippage
 Recommended use: Upholstery
 made in: China

Care & Cleanability:

Cleaning code **W** – Spot clean with water based upholstery shampoo or foam upholstery cleaner. Pretest a small, inconspicuous area before proceeding. Do not over wet. Do not use solvents to spot clean. Cushion covers should not be removed and laundered. When cleaning a spill, blot immediately to remove the spilled material. Evenly clean the entire panel in a seam to seam fashion. Do not clean just the spots or stains. When an overall soiled condition has been reached and professional care is required, contact an IICRC certified firm (www.iicrc.org.)>