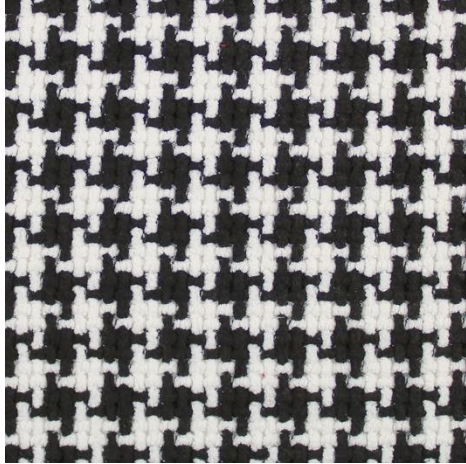


SHERLOCK



Specifications:

content:	100% Polyester
backing:	Synthetic latex blend
finish:	iClean
repeat:	0.79" W x 0.79" H
weight:	35.5 oz. / lin. yd.
width:	54 inches

Flammability Passes:

California Tech. Bulletin #117-2013
 UFAC Class 1
 NFPA 260 Class 1

Performance:

abrasion:	Heavy Duty – 95,000 cycles (Wyzenbeek – Cotton duck Abradant) (ASTM D4157)
light fastness:	Class 4/40 hrs. min. (AATCC16A)
color fastness:	Class 4.5 (ASTM D3597, AATCC 8) Wet Class 4.5 (ASTM D3597, AATCC 8) Dry
physical properties:	Class 4 (ASTM D3511) Brush Pill 199 lbs. warp, 249 lbs. weft (ASTM D5034) Breaking Strength 54 lbs. warp, 39 lbs. weft (ASTM D4034) Seam Slippage

made in: China

Care & Cleanability:

Cleaning code **W** - Spot clean only with water based upholstery shampoo or foam upholstery cleaner. Pretest a small, inconspicuous area before proceeding. Do not over wet. Do not use solvents to spot clean. Cushion covers should not be removed and laundered. When cleaning a spill, blot immediately to remove the spilled material. Evenly clean the entire panel in a seam to seam fashion. Do not clean just the spots or stains. When an overall soiled condition has been reached and professional care is required, contact an IICRC certified firm (www.iicrc.org).