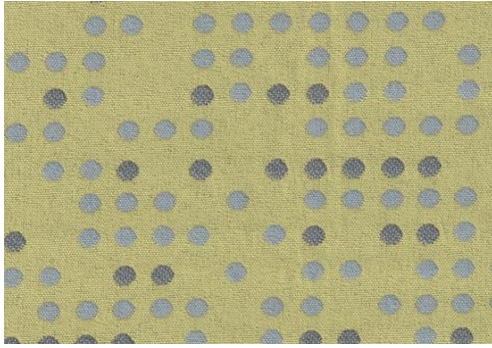


Punch Card



## Specifications:

content: 61% Polyester, 39% Repreve®

backing: Synthetic latex blend

finish:

Repeat: H: 7.5" V: 11"

weight: 15.4 oz.

width: 54 inches

5

California Tech. Bulletin #117-2013  
 UFAC Class 1  
 NFPA 260 Class 1

ASTM E-84 Class 1

## Performance:

abrasion: Heavy Duty – 40,000 cycles  
 (Wyzenbeek – Cotton duck Abradant) (ASTM D4157)

light fastness: Class 4/40 hrs. min. (AATCC16A)

color fastness: Class 3 (ASTM D3597, AATCC 8) Wet  
 Class 4 (ASTM D3597, AATCC 8) Dry

physical properties: Class 3 (ASTM D3511) Brush Pill  
 111 lbs. warp, 206 lbs. weft (ASTM D5034) Breaking Strength  
 40 lbs. warp, 55 lbs. weft (ASTM D4034) Seam Slippage

made in: China

## Care &amp; Cleanability:

Cleaning code **W** - Spot clean only with water based upholstery shampoo or foam upholstery cleaner. Pretest a small, inconspicuous area before proceeding. Do not over wet. Do not use solvents to spot clean. Cushion covers should not be removed and laundered. When cleaning a spill, blot immediately to remove the spilled material. Evenly clean the entire panel in a seam to seam fashion. Do not clean just the spots or stains. When an overall soiled condition has been reached and professional care is required, contact an IICRC certified firm ([www.iicrc.org](http://www.iicrc.org)).