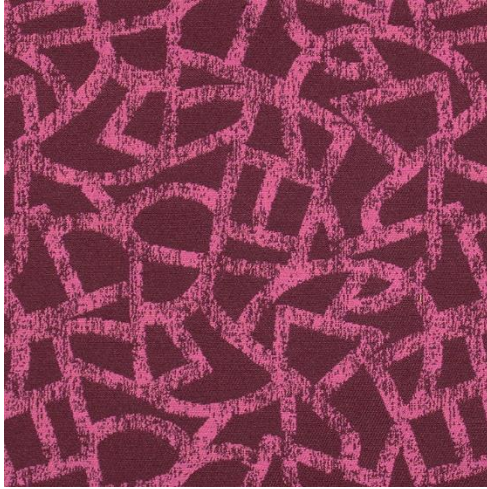


KINECT



## Specifications:

content:	100% Polyester
backing:	Synthetic latex blend
finish:	iClean
repeat:	7.20" H x 8.66" W
weight:	15.60 oz. / lin. yd.
width:	54 inches

## Flammability Passes:

California Tech. Bulletin #117-2013  
 UFAC Class 1  
 NFPA 260 Class 1

## Performance:

abrasion:	Heavy Duty – 100,000 cycles (Wyzenbeek – Cotton duck Abradant) (ASTM D4157)
light fastness:	Class 4/40 hrs. min. (AATCC16A)
color fastness:	Class 4 (ASTM D3597, AATCC 8) Wet Class 4 (ASTM D3597, AATCC 8) Dry
physical properties:	Class 4 (ASTM D3511) Brush Pill 232 lbs. warp, 260 lbs. weft (ASTM D5034) Breaking Strength 83 lbs. warp, 56 lbs. weft (ASTM D4034) Seam Slippage
made in:	China

## Care &amp; Cleanability:

Cleaning code **W** - Spot clean only with water based upholstery shampoo or foam upholstery cleaner. Pretest a small, inconspicuous area before proceeding. Do not over wet. Do not use solvents to spot clean. Cushion covers should not be removed and laundered. When cleaning a spill, blot immediately to remove the spilled material. Evenly clean the entire panel in a seam to seam fashion. Do not clean just the spots or stains. When an overall soiled condition has been reached and professional care is required, contact an IICRC certified firm ([www.iicrc.org](http://www.iicrc.org)).